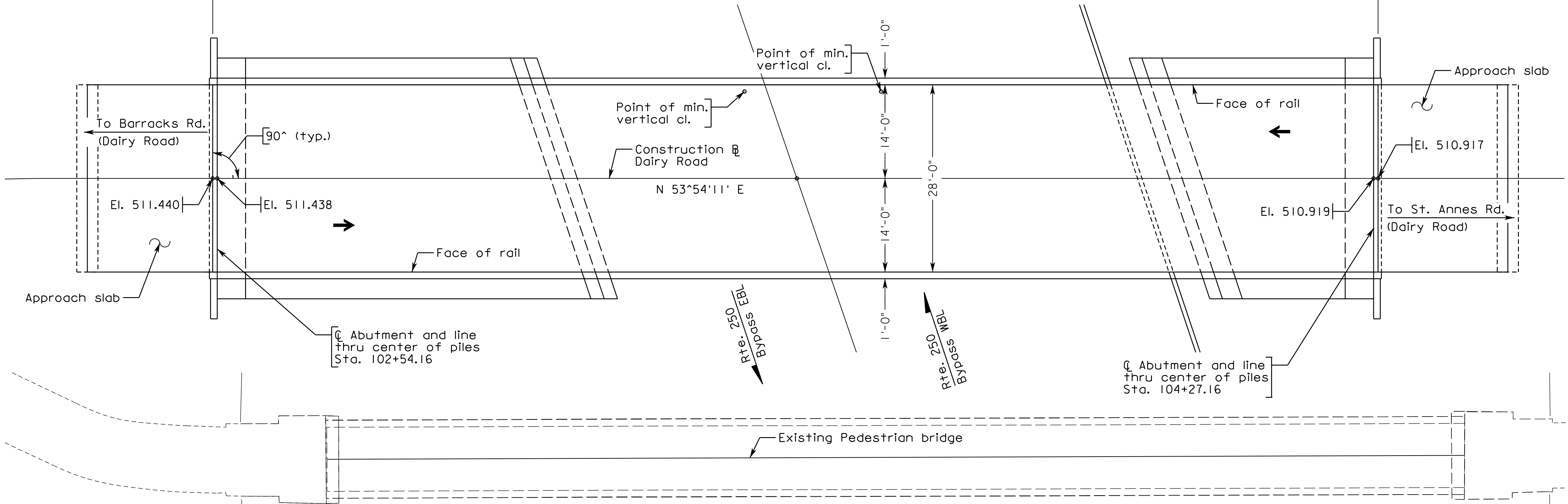
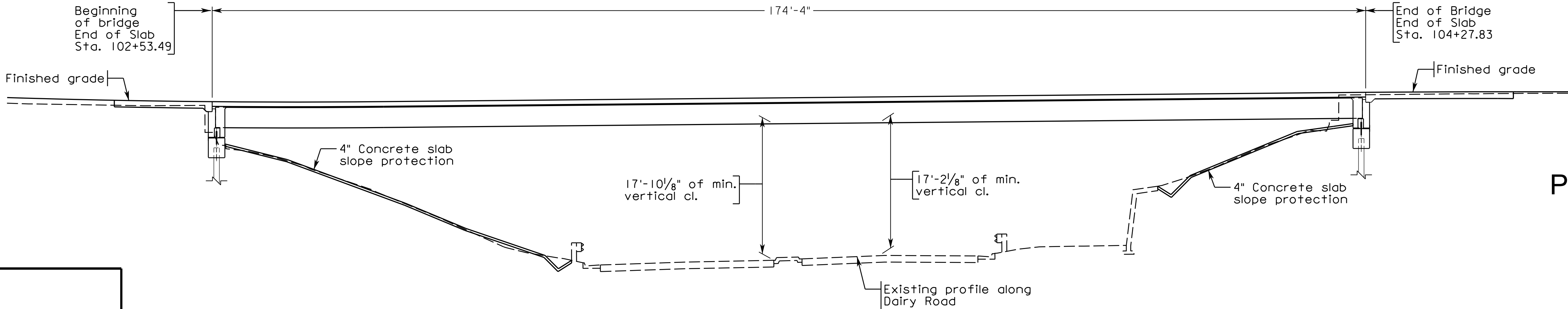
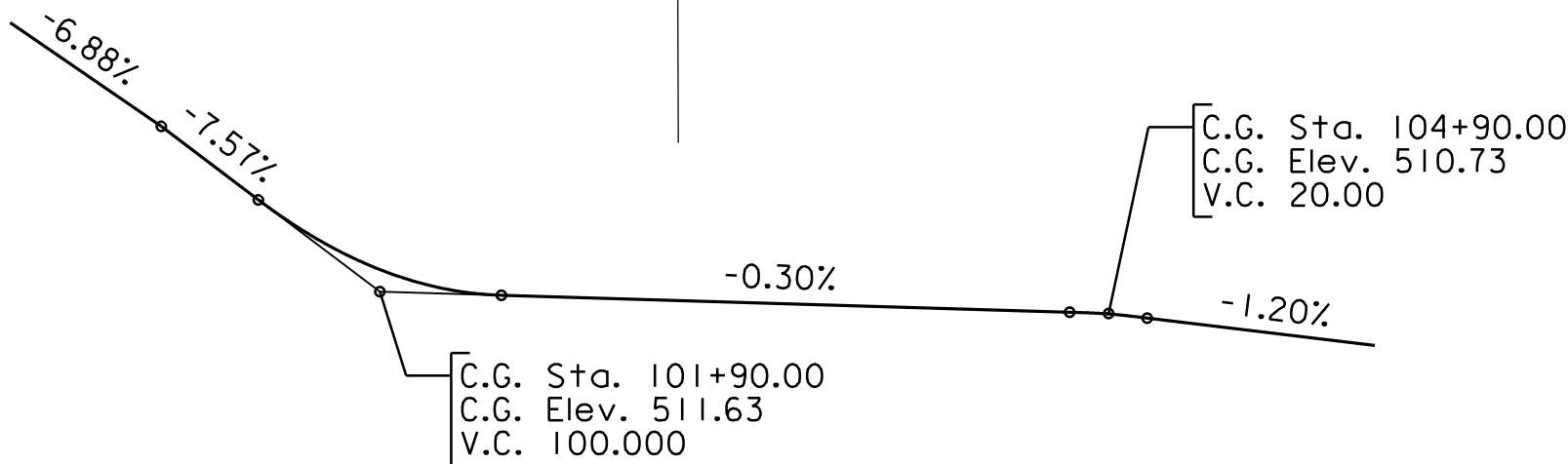


Beginning of bridge
End of Slab
Sta. 102+53.49

End of Bridge
End of Slab
Sta. 104+27.83



PLAN



DEVELOPED SECTION ALONG CONSTRUCTION @

STATE	FEDERAL AID		STATE		SHEET NO.
	ROUTE	PROJECT	ROUTE	PROJECT	
VA.	—	STP-5104 (326)	—	U000-104-365, B620, C501, P101	1
Federal Structure No.		20073	FHWA Construction and Scour Code:		—
Federal Stewardship and Oversight Code:				UPC No. 118295	

DESIGN EXCEPTION(S):

None

GENERAL NOTES:

Width: 3'-0" shoulder, 22'-0" roadway
30'-0" overall width

Span layout: 174'-4" Steel girder, single span

Capacity: HL-93 loading.

Specifications:

Construction: Virginia Department of Transportation Road and Bridge Specifications, 2020; and SP407-000500 (Special Provision for Superstructure Erection Stability).

Design: AASHTO LRFD Bridge Design Specifications 8th Edition, and VDOT Modifications.

Standards: Virginia Department of Transportation Road and Bridge Standards, 2016; including all current revisions.

These plans are incomplete unless accompanied by the Supplemental Specifications and Special Provisions included in the contract documents.

Note:

"Existing Bridge Not Shown for Clarity"



CITY OF CHARLOTTESVILLE
NEIGHBORHOOD DEVELOPMENT
SERVICES

PROPOSED BRIDGE REPLACEMENT ON

DAIRY ROAD BRIDGE
OVER ROUTE 250 BYPASS
CITY OF CHARLOTTESVILLE

PROJ. U000-104-365, B620, C501, P101

Recommended for Approval: City Engineer

Date

KIMLEY-HORN & ASSOC.
RICHMOND, VA
STRUCTURAL ENGINEER

PLANS BY:	—
COORDINATED:	—
SUPERVISED:	—
DESIGNED:	—
DRAWN:	—
CHECKED:	—

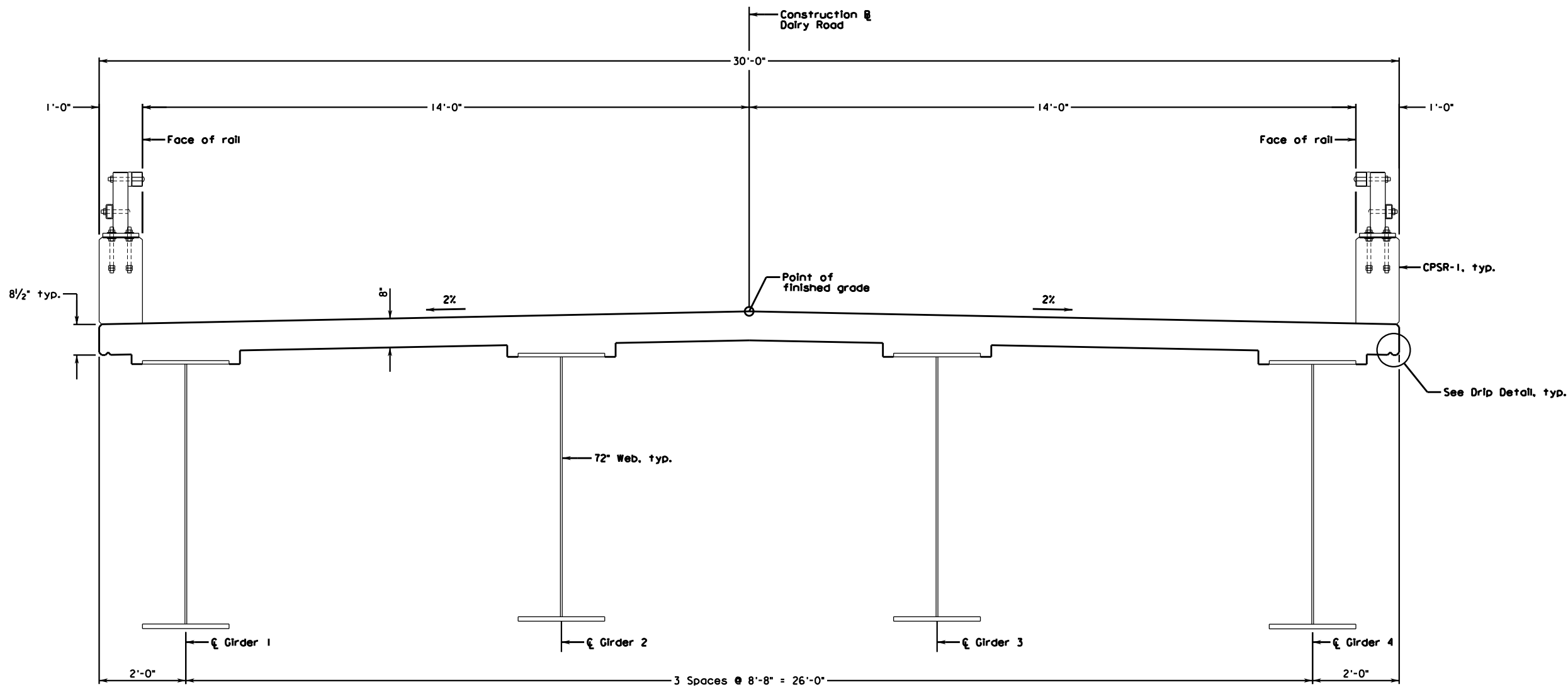
No.	Description	Date
REVISIONS		
For Table of Revisions, see Sheet --		

Date: September 2025

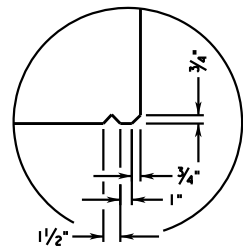
© 2025, Commonwealth of Virginia

XXX-XX
Sheet 1 of 8

STATE	FEDERAL AID		STATE	PROJECT		SHEET NO.
	ROUTE			ROUTE		
VA.	---	STP-5104 (326)	---	U000-104-365, B620, C501, P101		---



TRANSVERSE SECTION



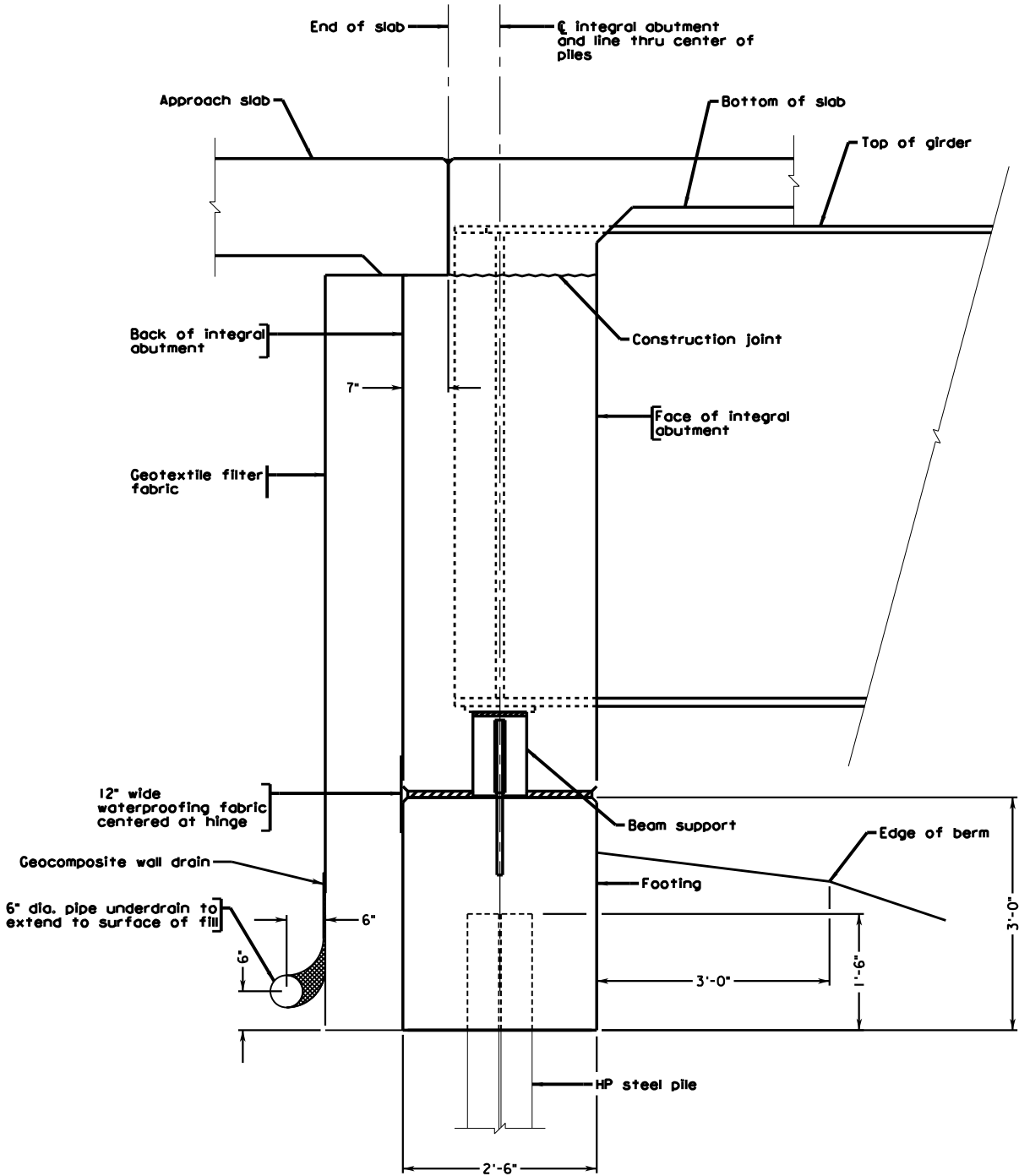
DETAIL
SCALE: 1 1/2" = 1'-0"

KIMLEY-HORN & ASSOC.
RICHMOND, VA
STRUCTURAL ENGINEER

© 2025, Commonwealth of Virginia

CITY OF CHARLOTTESVILLE					
TRANSVERSE SECTION					
No.	Description	Date	Designed: KMR Drawn: RCA Checked: DGD	Date March 2025	Plan No. XXX-XX
Revisions			Sheet No. 2 of 8		

STATE	FEDERAL AID		STATE		SHEET NO.
	ROUTE	PROJECT	ROUTE	PROJECT	
VA.	---	STP-5104 (326)	---	U000-104-365, B620, C501, P101	---

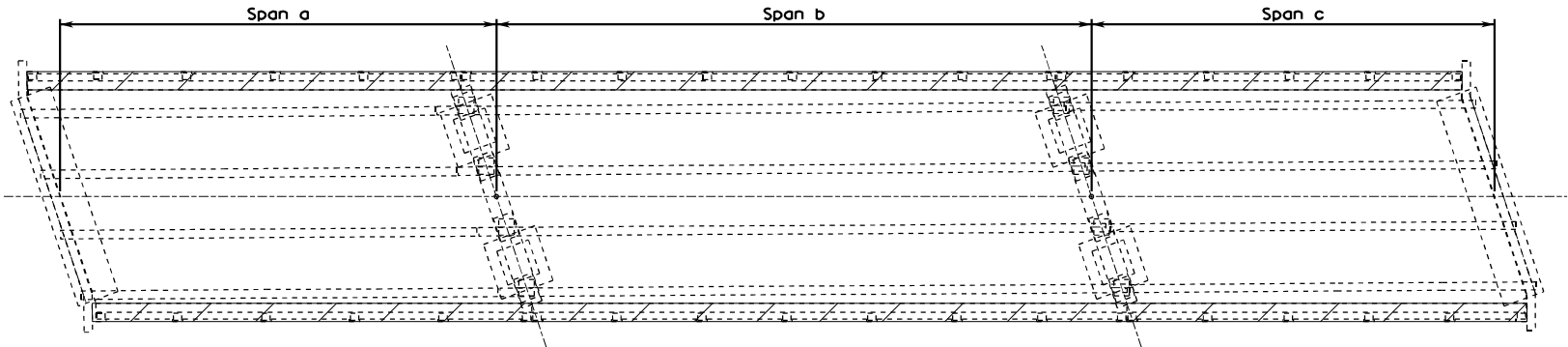


ABUTMENT TYPICAL DETAIL
Scale: 1" = 1'-0"

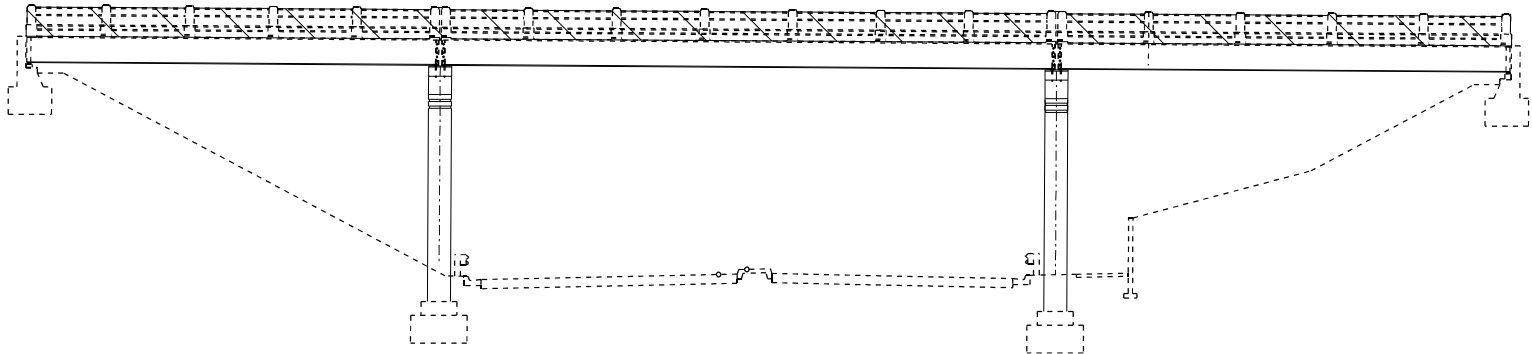
KIMLEY-HORN & ASSOC.
RICHMOND, VA
STRUCTURAL ENGINEER

			CITY OF CHARLOTTESVILLE			
			ABUTMENT DETAILS			
No.	Description	Date	Designed: DGD Drawn: RCA Checked: KMR	Date March 2025	Plan No. XXX-XX	Sheet No. 3 of 8
Revisions						

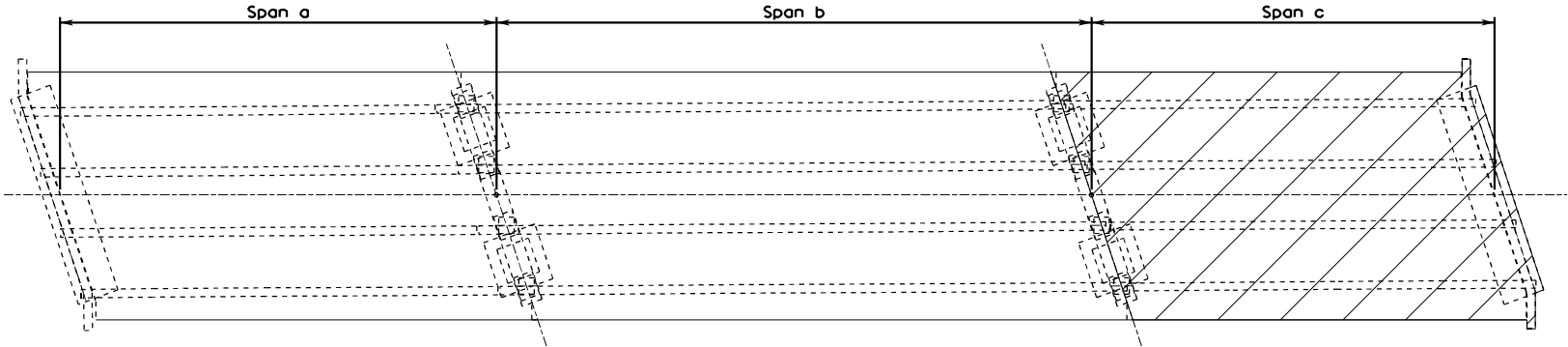
STATE	FEDERAL AID		STATE	PROJECT		SHEET NO.
	ROUTE	PROJECT		ROUTE	PROJECT	
VA.	---	STP-5104 (326)	---	U000-104-365, B620, C501, P101	---	---



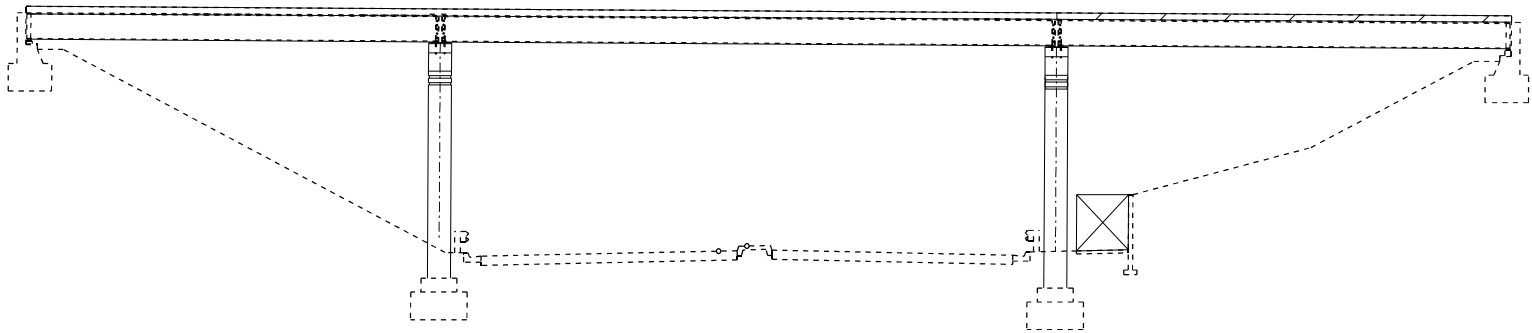
PLAN



ELEVATION
PHASE I



PLAN



ELEVATION
PHASE 2a

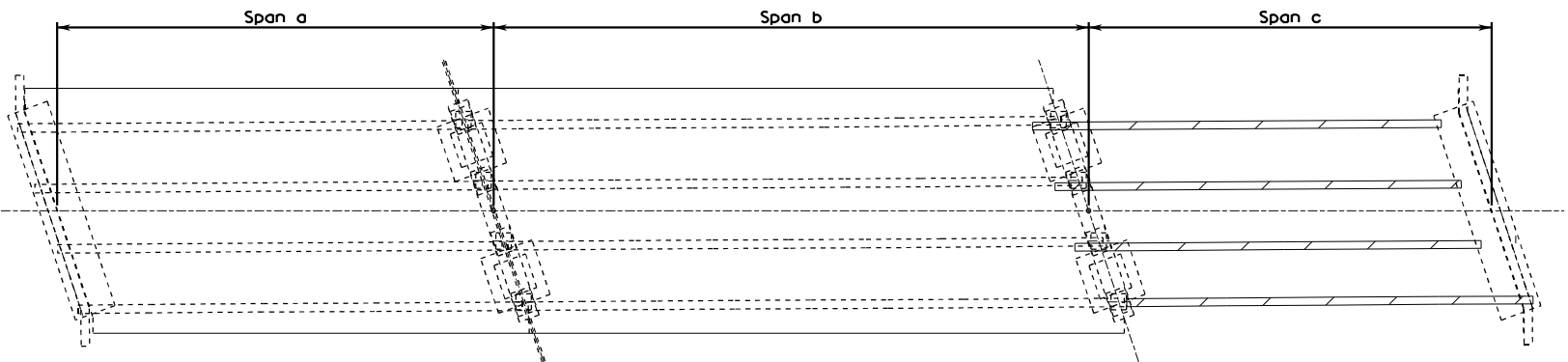
- PHASE 1:
1. Close Dairy Road bridge to traffic
 2. Remove railing and curb for both sides of bridge.

- PHASE 2a:
1. Close Shared path.
 2. Remove slab on Span c.

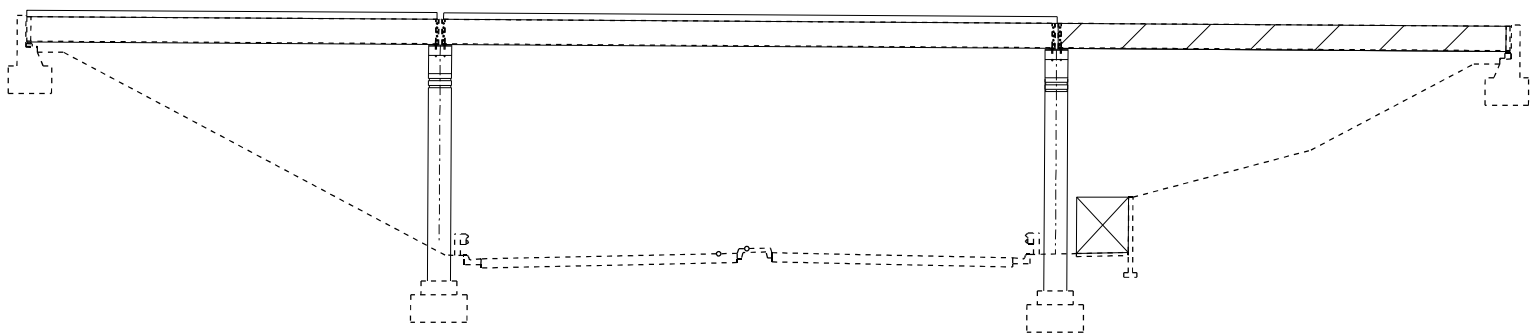
Note: Contractor to check stability of Pier 2 prior to the removal of slab on Span c.

KIMLEY-HORN & ASSOC.
RICHMOND, VA
STRUCTURAL ENGINEER

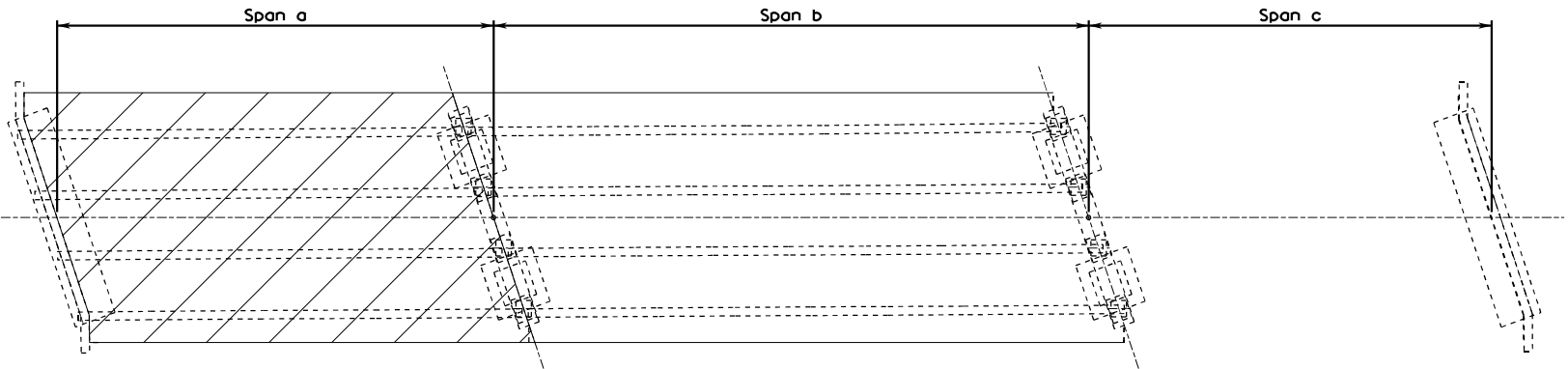
CITY OF CHARLOTTESVILLE					
ERECTION SCHEMATICS 1 OF 4					
No.	Description	Date	Designed: DGD Drawn: RCA Checked: KMR	Date March 2025	Plan No. XXX-XX
Revisions			Sheet No. 4 of 8		



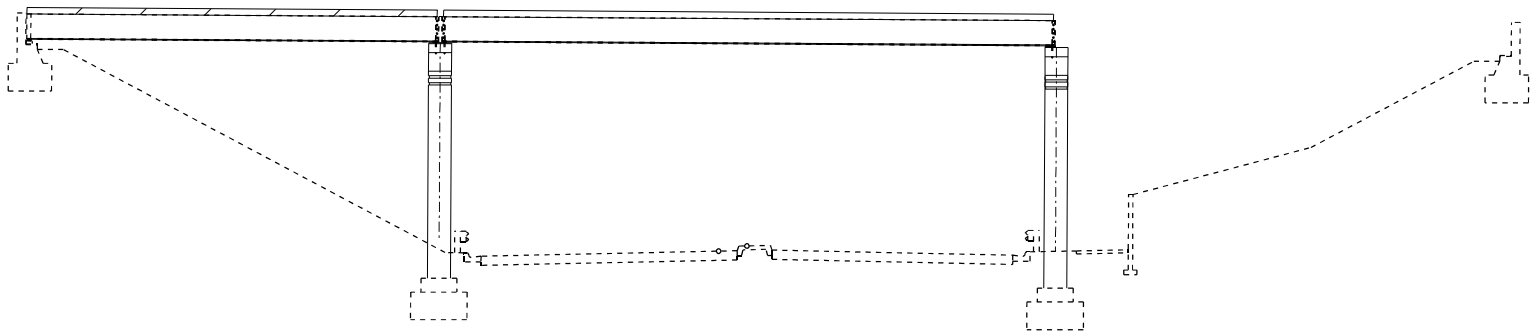
PLAN



ELEVATION
PHASE 2b



PLAN



ELEVATION
PHASE 3a

STATE	FEDERAL AID		STATE		SHEET NO.
	ROUTE	PROJECT	ROUTE	PROJECT	
VA.	---	STP-5104 (326)	---	U000-104-365, B620, C501, P101	---

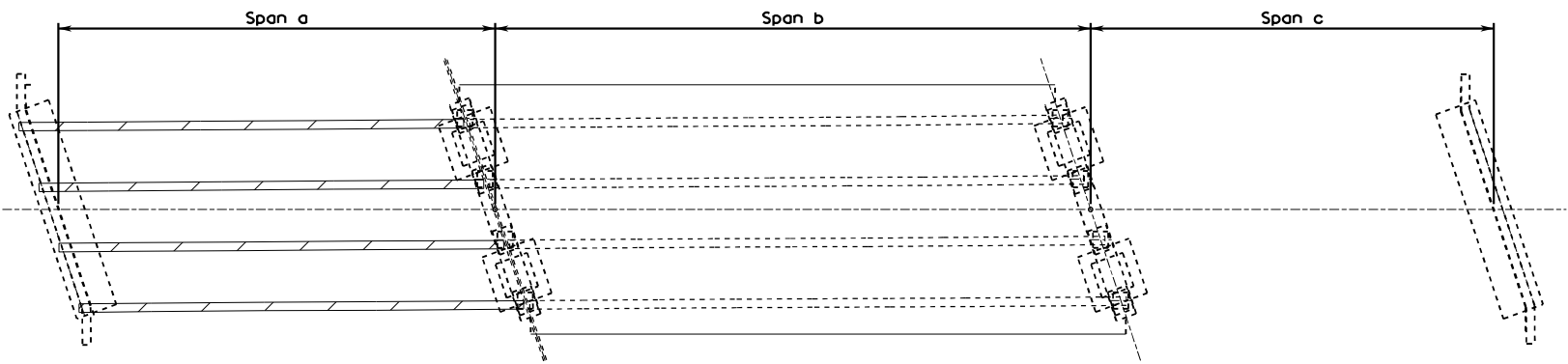
- PHASE 2b:
1. Remove diaphragms in center bay.
 2. Remove Girders 1 and 2.
 3. Remove Girders 3 and 4.

- PHASE 3a:
1. Remove slab on Span a.

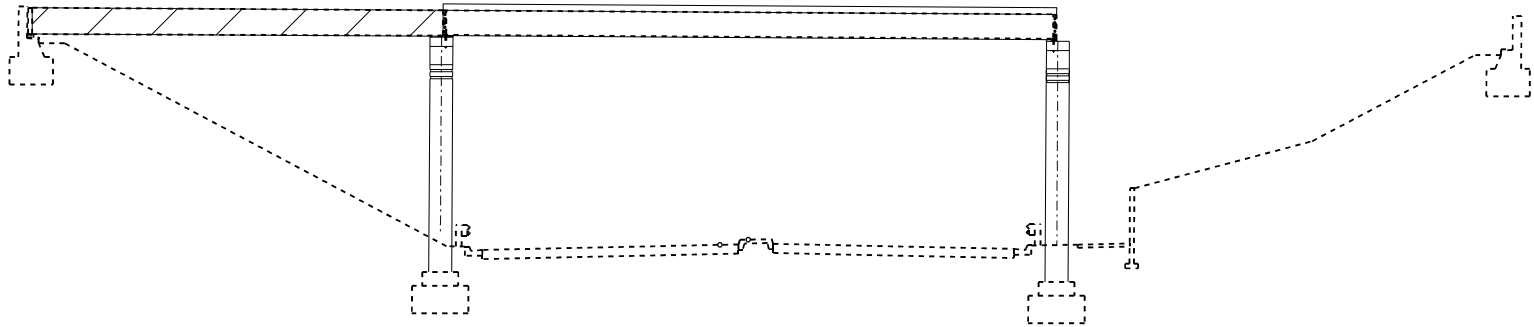
Note: Contractor to check stability of Pier 2 prior to the removal of girders in Span c. Contractor to check stability of Pier 1 prior to the removal of slab on Span a.

KIMLEY-HORN & ASSOC.
RICHMOND, VA
STRUCTURAL ENGINEER

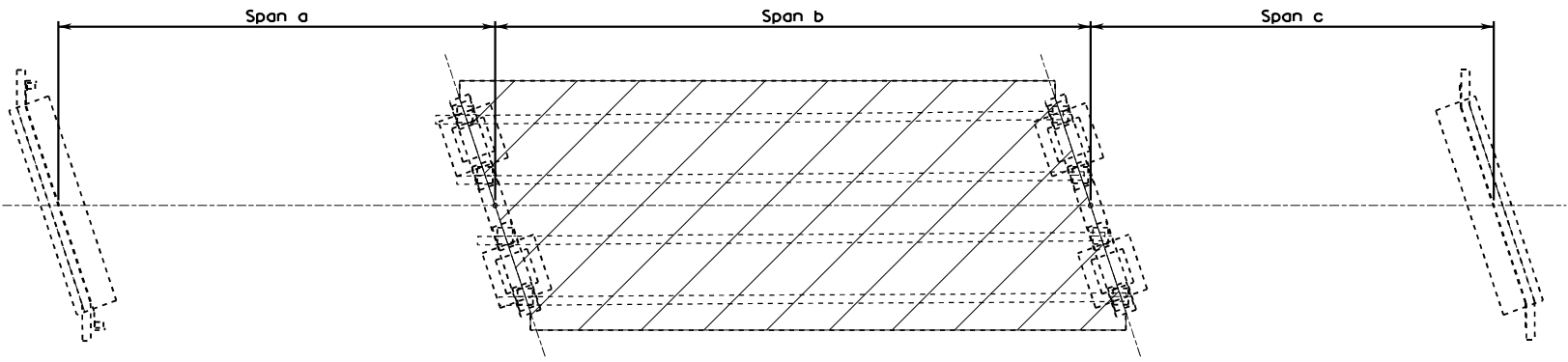
CITY OF CHARLOTTESVILLE					
ERECTION SCHEMATICS 2 OF 4					
No.	Description	Date	Designed: DGD Drawn: RCA Checked: KMR	Date March 2025	Plan No. XXX-XX
Revisions			Sheet No. 5 of 8		



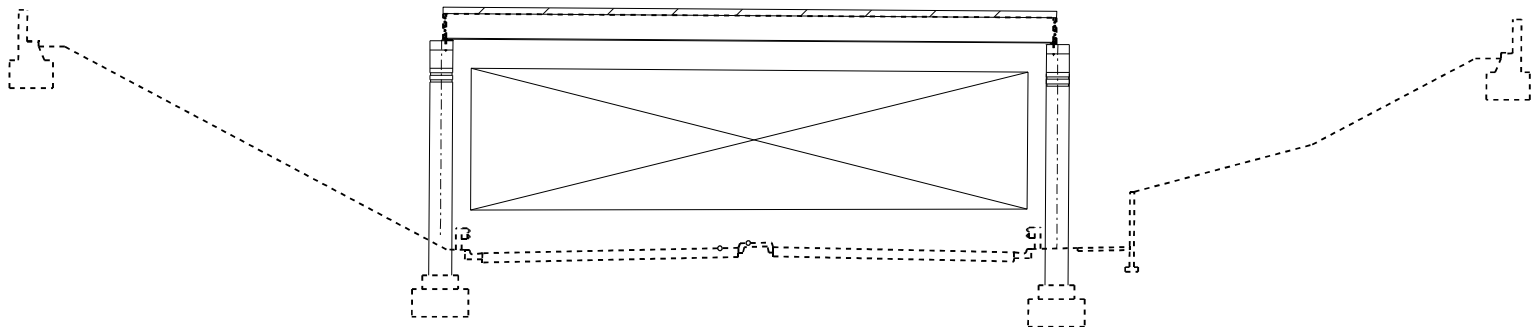
PLAN



ELEVATION
PHASE 3b



PLAN



ELEVATION
PHASE 4a



STATE	FEDERAL AID		STATE	PROJECT		SHEET NO.
	ROUTE	PROJECT		ROUTE	PROJECT	
VA.	---	STP-5104 (326)	---	U000-104-365, B620, C501, P101	---	---

PHASE 3b:

1. Remove diaphragms in center bay.
2. Remove Girders 1 and 2.
3. Remove Girders 3 and 4.

PHASE 4a:

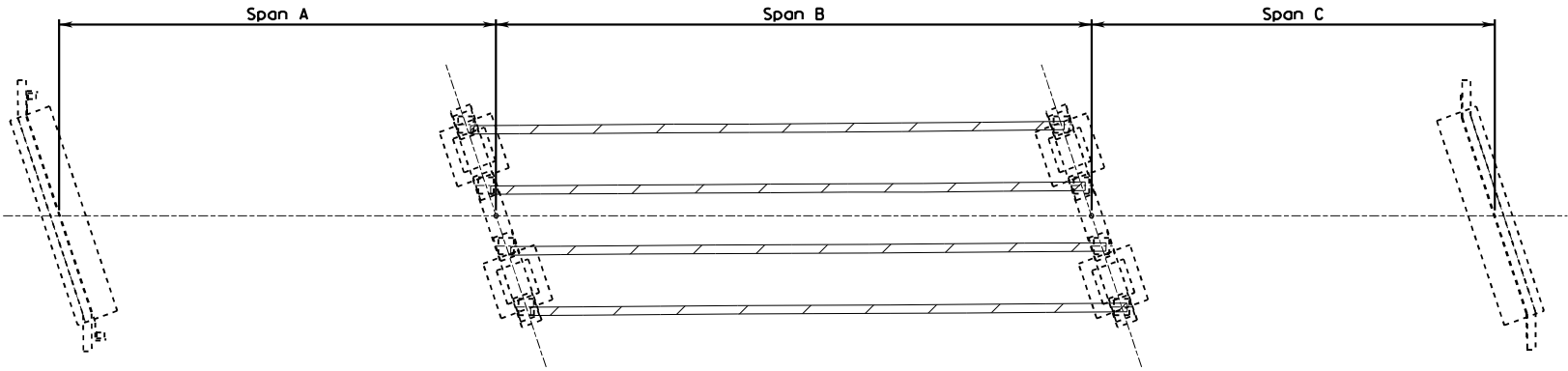
1. Close Route 250.
2. Remove slab for Span b.

Note: Constrator to check stability of Pier 1 prior to the removal of girders in Span a.

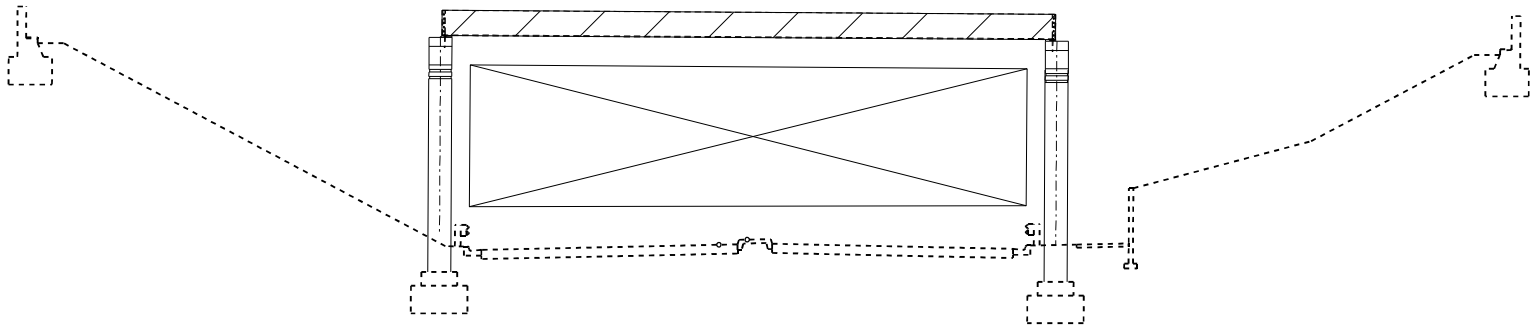
KIMLEY-HORN & ASSOC.
RICHMOND, VA
STRUCTURAL ENGINEER

CITY OF CHARLOTTESVILLE					
ERECTION SCHEMATICS 3 OF 4					
No.	Description	Date	Designed: DGD Drawn: RCA Checked: KMR	Date March 2025	Plan No. XXX-XX
Revisions			Sheet No. 6 of 8		

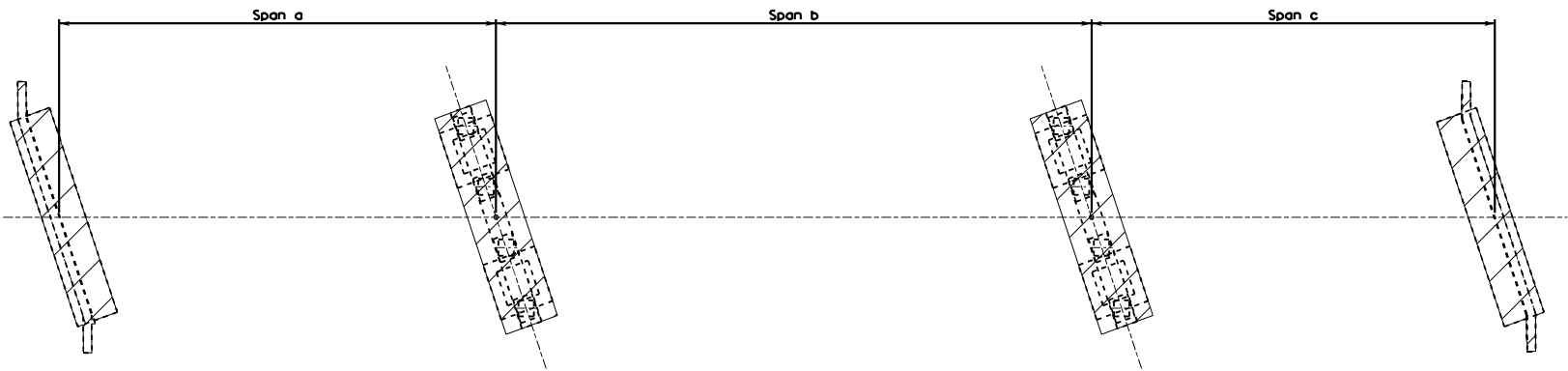
STATE	FEDERAL AID		STATE	PROJECT		SHEET NO.
	ROUTE	PROJECT		ROUTE	PROJECT	
VA.	---	STP-5104 (326)	---	U000-104-365, B620, C501, P101	---	---



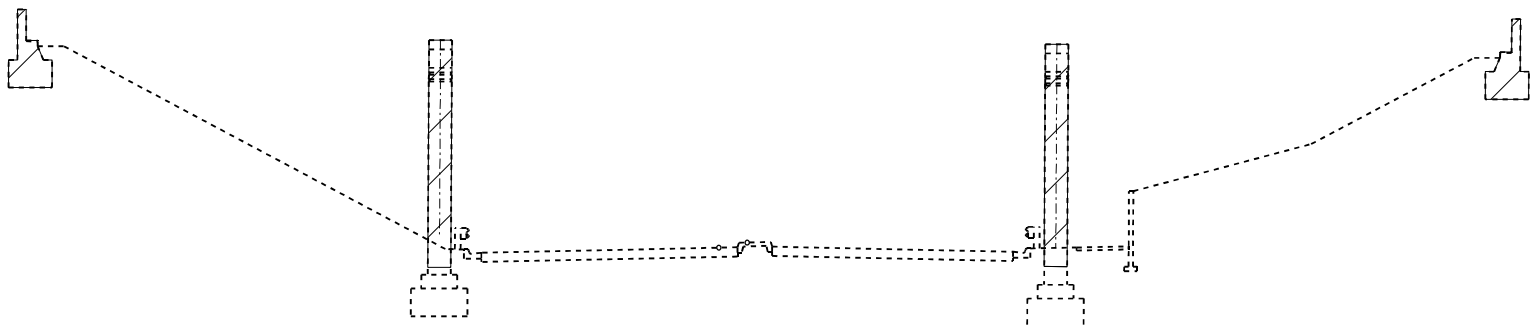
PLAN



ELEVATION
PHASE 4b



PLAN



ELEVATION
PHASE 5

PHASE 4b:

1. Remove diaphragms in center bay.
2. Remove Girders 1 and 2.
3. Remove Girders 3 and 4.

PHASE 5:

1. Demo Piers to 2ft below ground.
2. Remove Abutments.

KIMLEY-HORN & ASSOC.
RICHMOND, VA
STRUCTURAL ENGINEER

CITY OF CHARLOTTESVILLE					
ERECTION SCHEMATICS 4 OF 4					
No.	Description	Date	Designed: DGD Drawn: RCA Checked: KMR	Date March 2025	Plan No. XXX-XX
Revisions			Sheet No. 7 of 8		

STATE	FEDERAL AID		STATE	SHEET NO.
	ROUTE	PROJECT		
VA.	---	STP-5104 (326)	---	U000-104-365, B620, C501, P101



GENERAL NOTES:

Phase 1

- 1. Close Rte. 250 Bypass EB.
- 2. Deliver Girders 3 and 4.
- 3. Complete assembly of Girders 3 and 4 with Field Splices.
- 4. Install Cross Frames between Girders 3 and 4.

Phase 2

- 1. Close Rte. 250 Bypass EB and WB and Shared Use Path during nighttime closure allowance times.
- 2. Pick Girders 3 and 4 with Cross Frames using 2 - XXXXW Cranes - XXXft Boom, Min. : Boom Angel = 62 Deg., Oper. Rad. = XX'.
- 3. Secure Girders in place.
- 4. Open Rte. 250 Bypass EB and WB.

Phase 3

- 1. Close Rte. 250 Bypass EB.
- 2. Deliver Girders 1 and 2.
- 3. Complete assembly of Girders 1 and 2 with Field Splices.
- 4. Install Cross Frames between Girders 1 and 2.

Phase 4

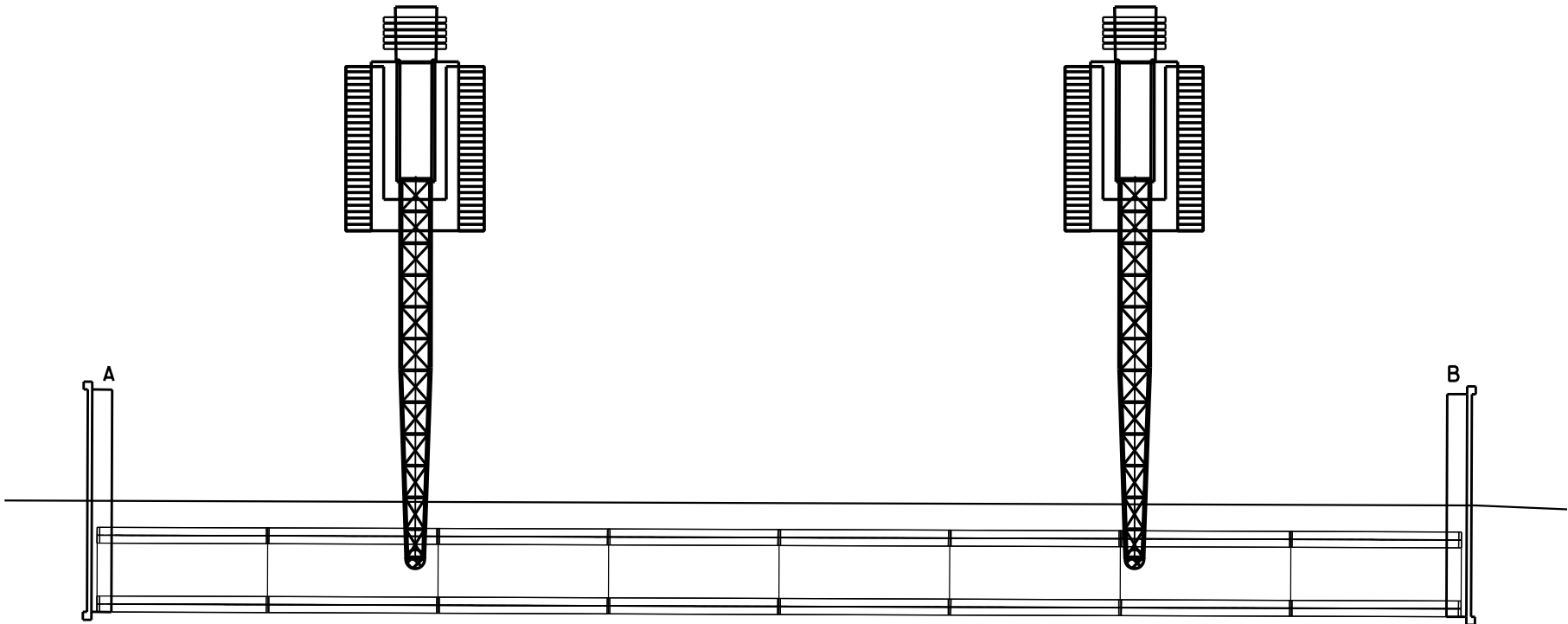
- 1. Close Rte. 250 Bypass EB and WB and Shared Use Path during nighttime closure allowance times.
- 2. Pick Girders 1 and 2 with Cross Frames using 2 - XXXXW Cranes - XXXft Boom, Min. : Boom Angel = 62 Deg., Oper. Rad. = XX'.
- 2. Secure Girders in place.
- 4. Open Rte. 250 Bypass EB and WB.

Phase 5

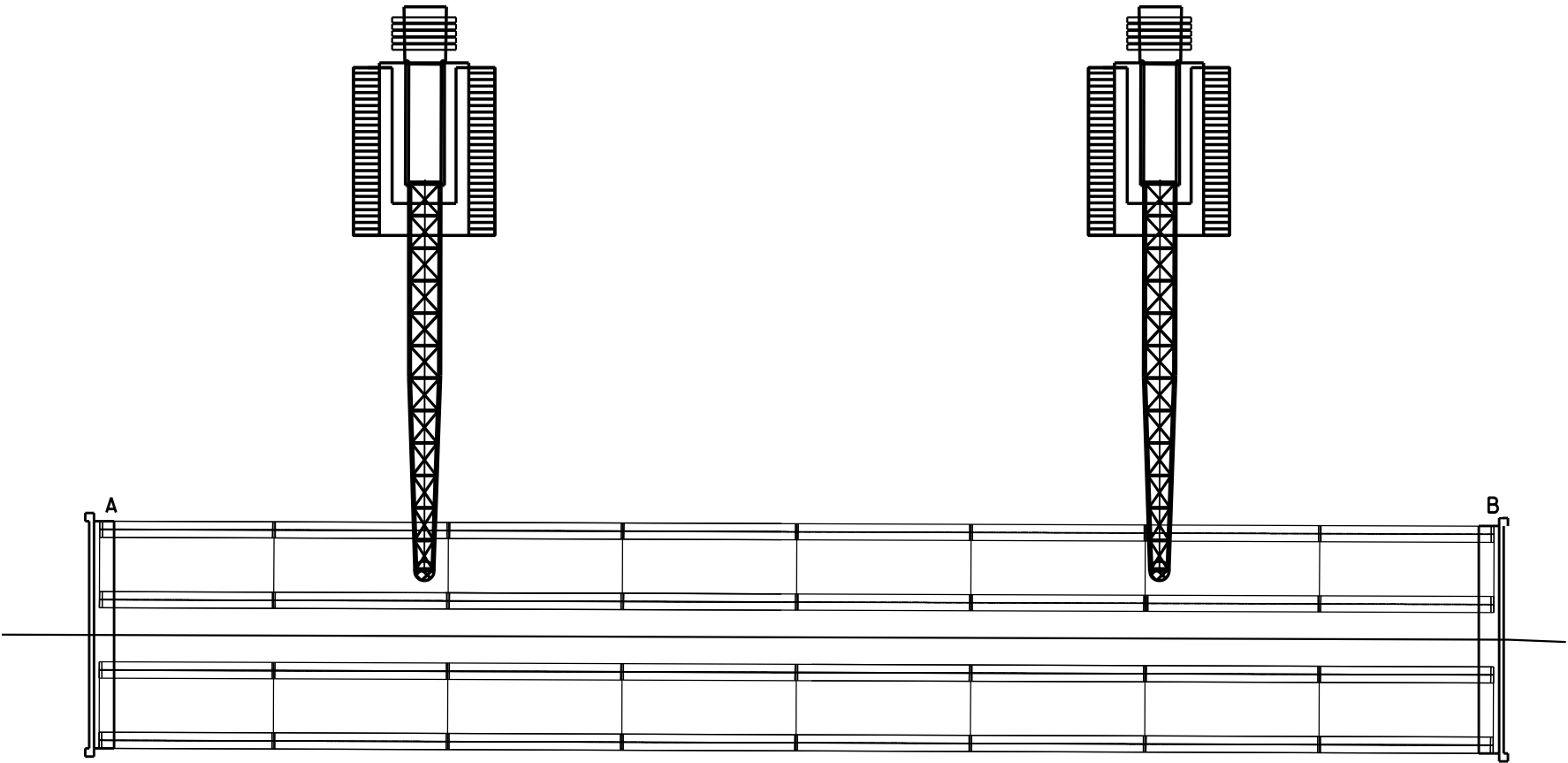
- 1. Install Cross Frames between Girders 2 and 3. No installation is allowed over live traffic (pedestrian traffic included).
- 2. Install Stay-in-place forms between Girders 1, 2, 3, and 4. No installation is allowed over live traffic (pedestrian traffic included).

Erection will occur at night with a total lane closer of Route 250 Bypass.

Note:
This is a schematic only. It is not a working drawing. The Contractor shall submit complete details of proposed erection methods and equipment in accordance with the specifications.



PLAN
PHASE 2



PLAN
PHASE 4

KIMLEY-HORN & ASSOC.
RICHMOND, VA
STRUCTURAL ENGINEER

CITY OF CHARLOTTESVILLE			
ERECTION PLAN			
No.	Description	Date	Designed: DGD Drawn: RCA Checked: KMR
Revisions		Date	Plan No.
		March 2025	XXX-XX
		Sheet No.	
		8 of 8	