

# dairyroadbridge.org



Comment form:



# Dairy Road Bridge Replacement

Public Hearing  
July 15, 2025

[dairyroadbridge.org](https://dairyroadbridge.org)





# Bridge Condition

- Current bridge was built in 1953, with a 50-year expected design life (2003)
- Bridge condition is rated “poor”
- Inspected annually, including most recently spring 2025
- Load restricted since 2007







# Background

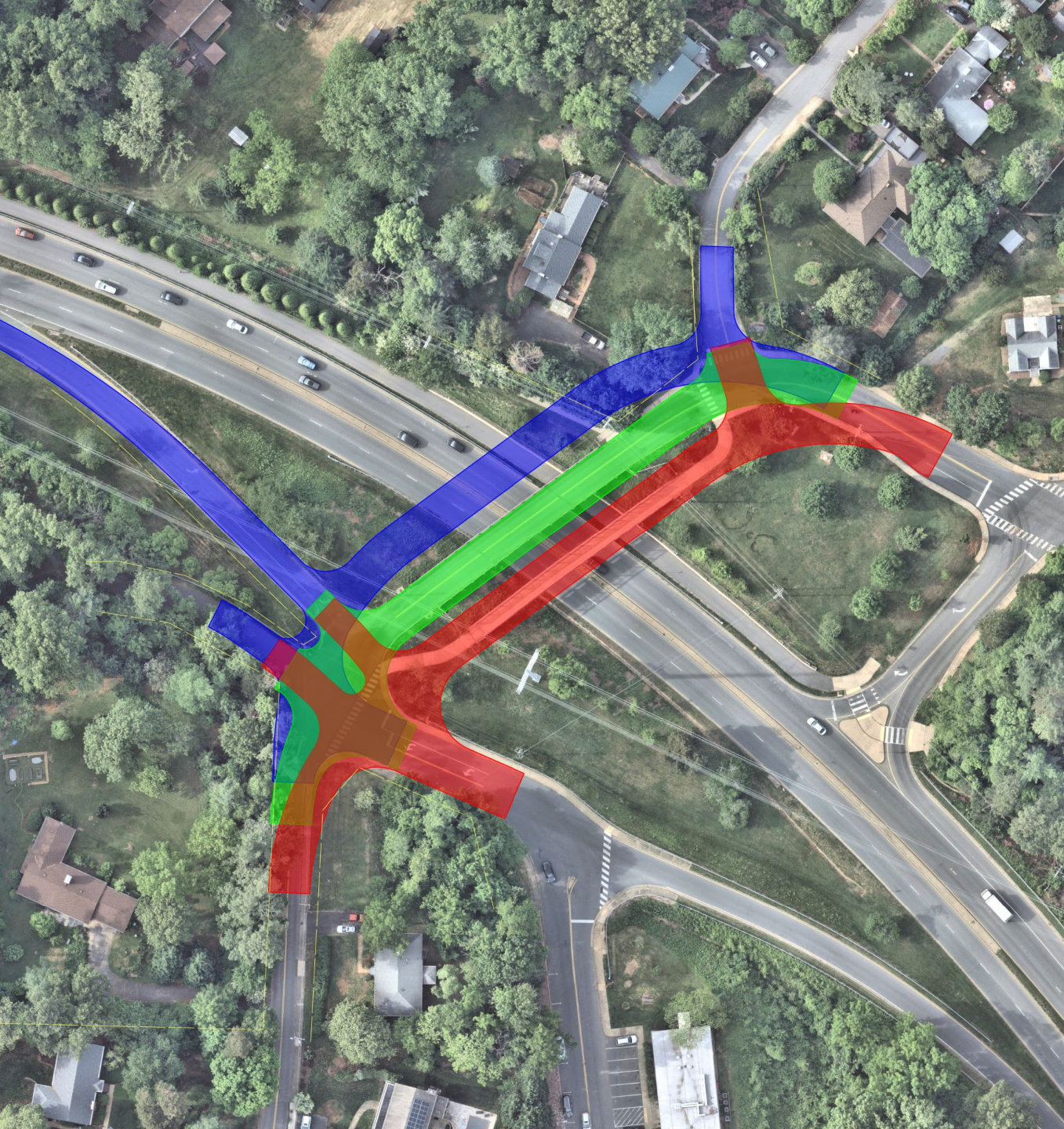
- Awarded \$7.2 Million in VDOT “State of Good Repair” funding to begin in FY2021
- Funding increase for FY2024 to \$8.1 Million
- Funding increase for FY2025 to \$12.6 Million

# Funding and Cost

- VDOT's **STATE OF GOOD REPAIR** Program
- State and Federal funds
- **No City matching funds required**
- Scope limited to “replace deteriorated elements in the most practical and cost-effective manner”
- **Funding and scope is fixed**





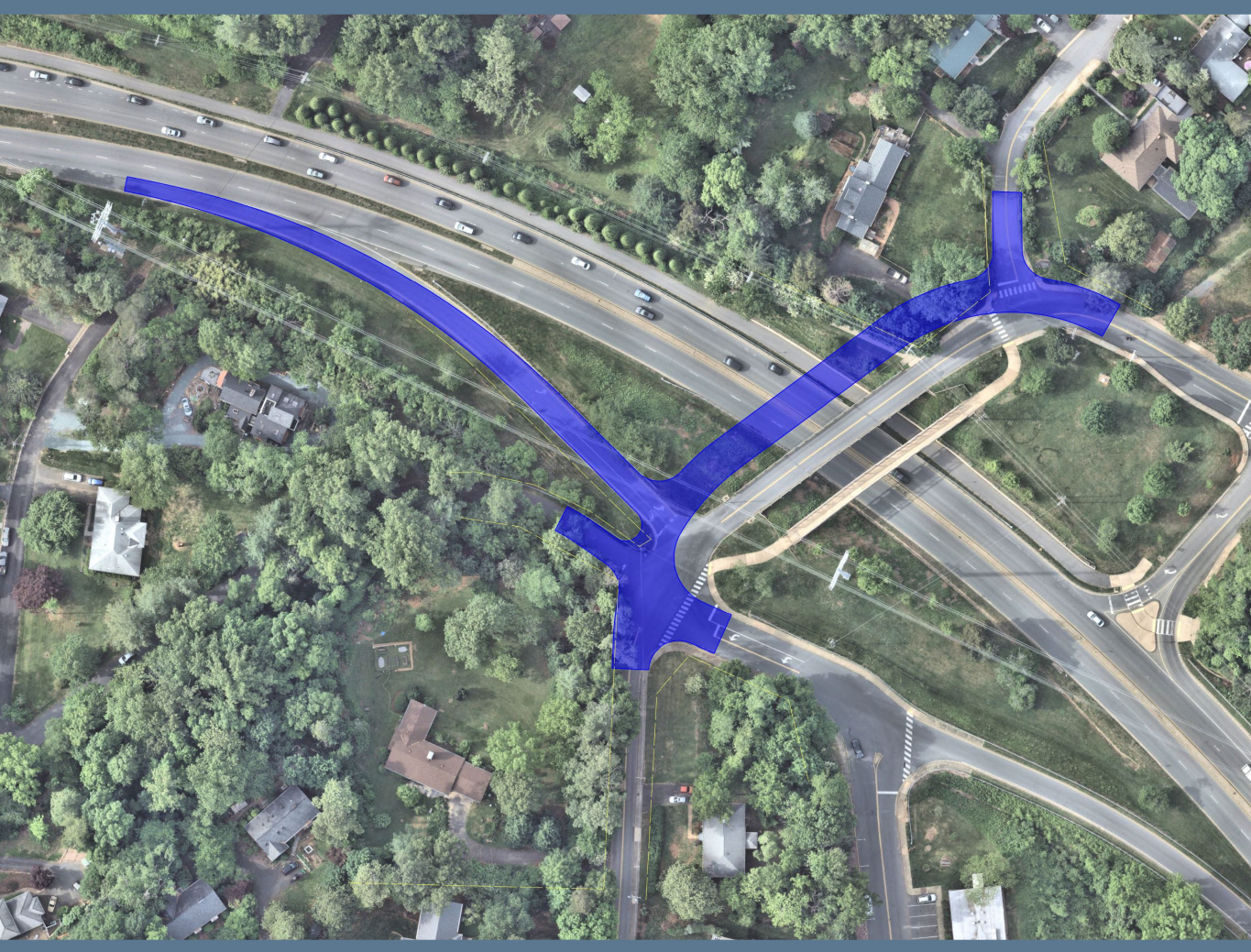


# Alternatives Considered

- **Current plan: Demolish and rebuild in place (green option)**
- Eliminated options due to cost and/or other impacts:
  - Build parallel bridge (to east or west)
  - Build bridge in half
  - Innovative/accelerated methods to build “slide-in” bridge



# Parallel Alternatives

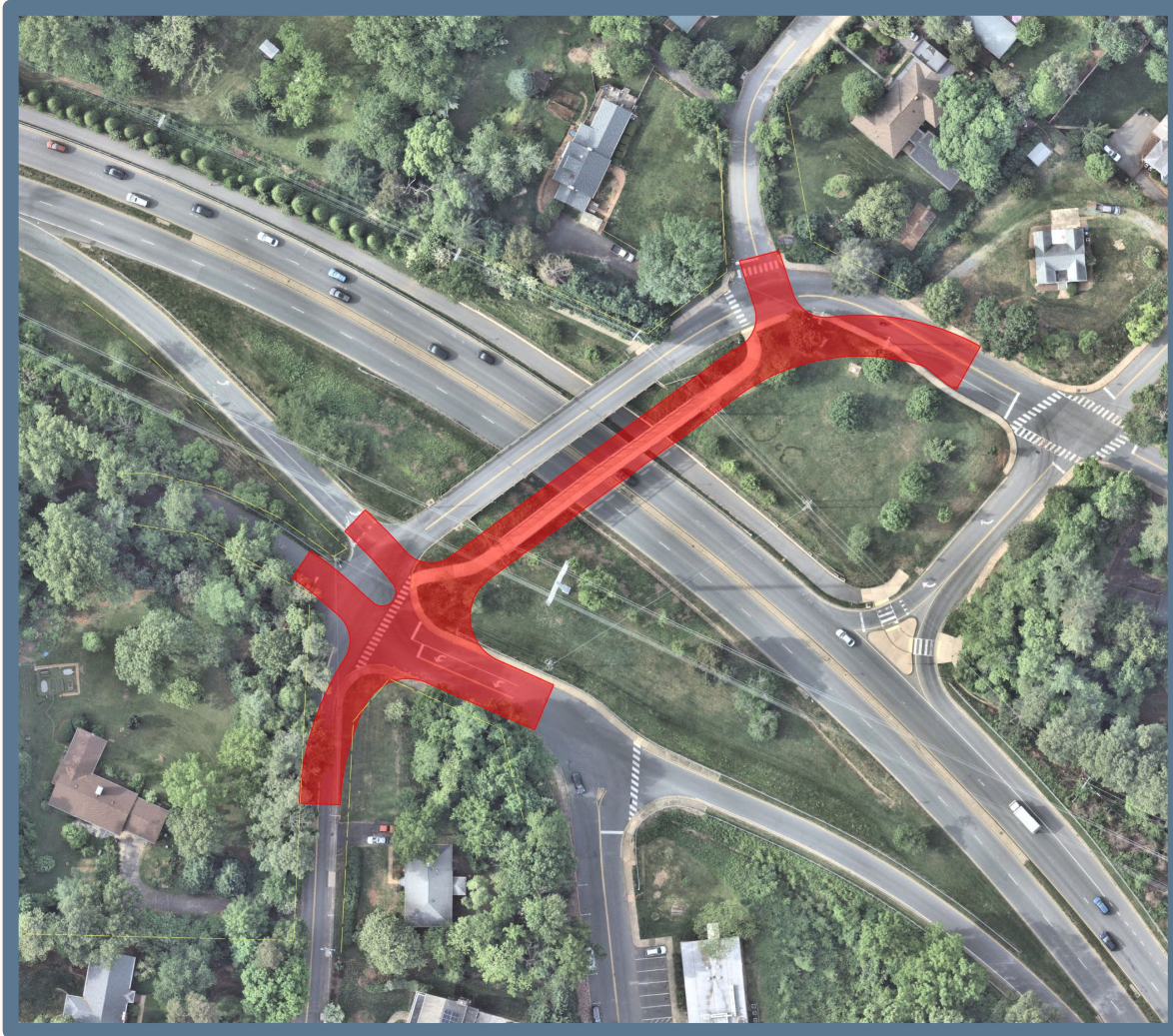


## Western Option

- Costly impacts to 250-Bypass off-ramp
- Significant property impacts at St. Anne's Road
- Property impacts at southwest corner
- More significant utility impacts
- Construction start delayed ~18 months
- ~50% higher total project cost



# Parallel Alternatives *(continued)*



## Eastern Option

- Removes pedestrian bridge during construction
- More significant utility impacts
- Potential impacts to Dominion overhead transmission lines
- Property impacts at Dairy Road and Gentry Lane
- Construction start delayed ~18 month
- ~45% higher total project cost



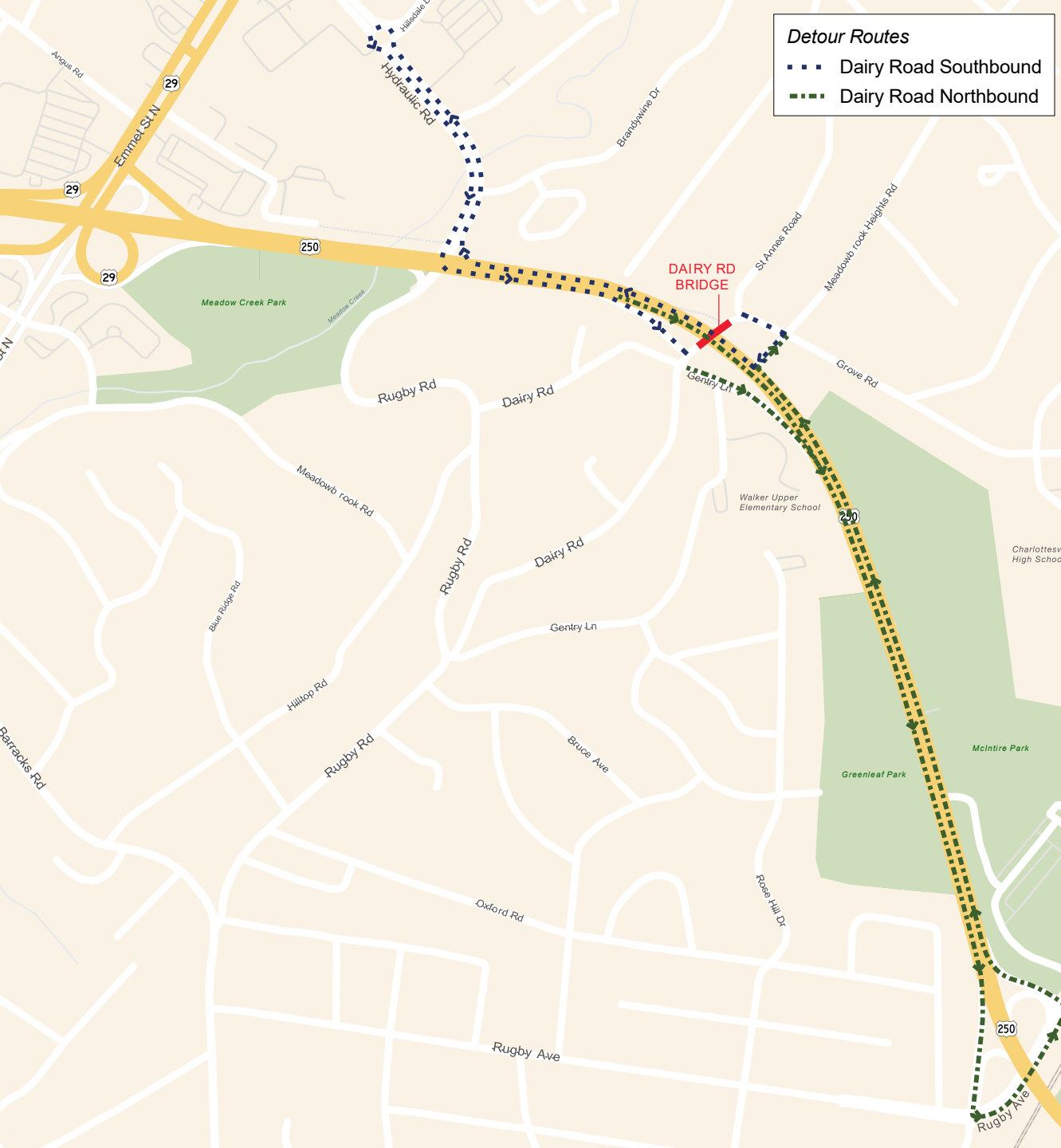
# In-Place Alternative (Staged Construction)

- \$\$** Partial demolition and reconstruction
- \$\$** Uses temporary signal trailer for one-way operations
- \$\$** Signal wait times of 4+ minutes (higher in peak hours) (detour is 3 – 7 minutes)
- X** Existing bridge foundation prevents staged construction



Source: [aasafetyinc.com](http://aasafetyinc.com)





#### Detour Routes

- • • Dairy Road Southbound
- • • Dairy Road Northbound

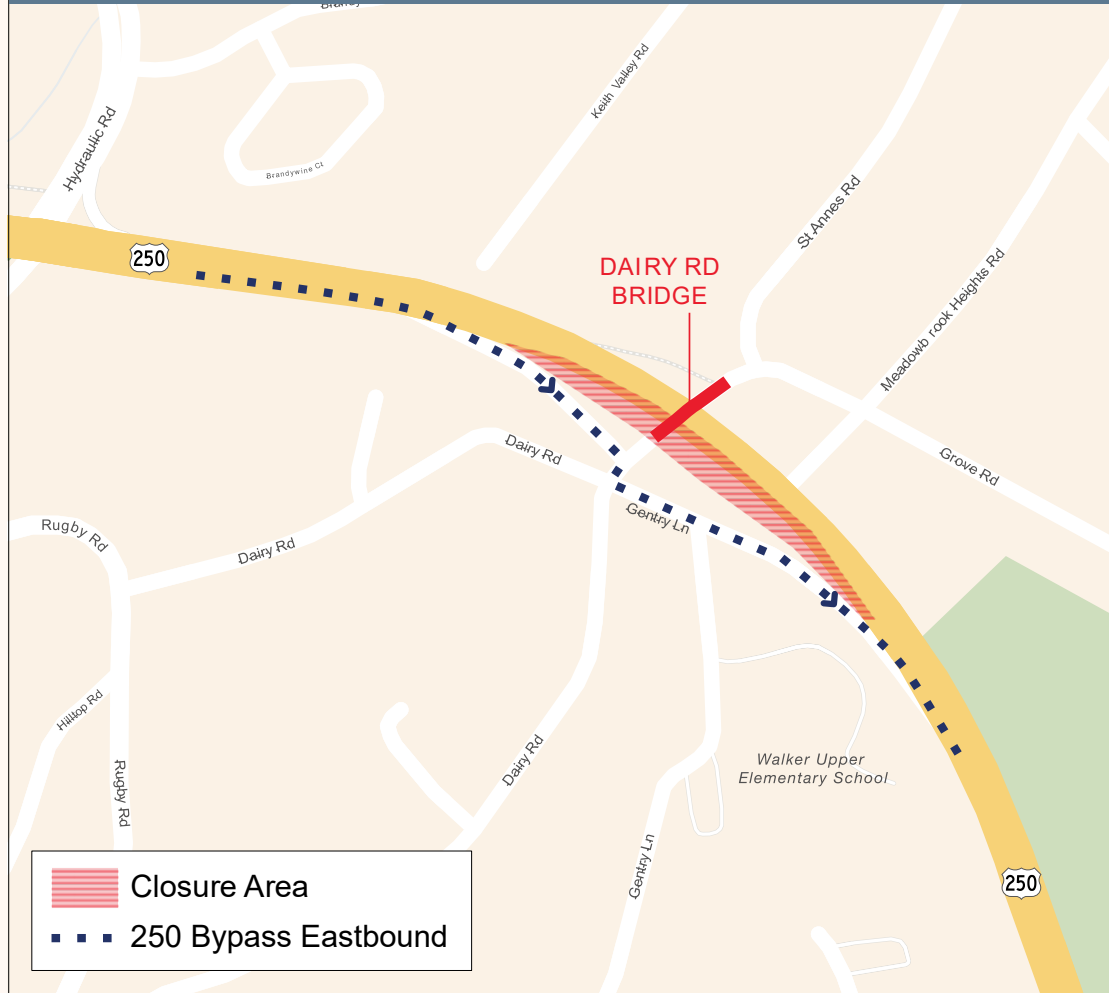
# Detours

- Dairy Road bridge to be closed 12-14 months
- Temporary improvements to minimize impacts
  - Temporary signal at Route 250 eastbound off-ramp at Rugby Ave
  - Review signal timing at Hydraulic Road and Route 250 bypass
- Limited (night and/or weekend) closure of 250-Bypass

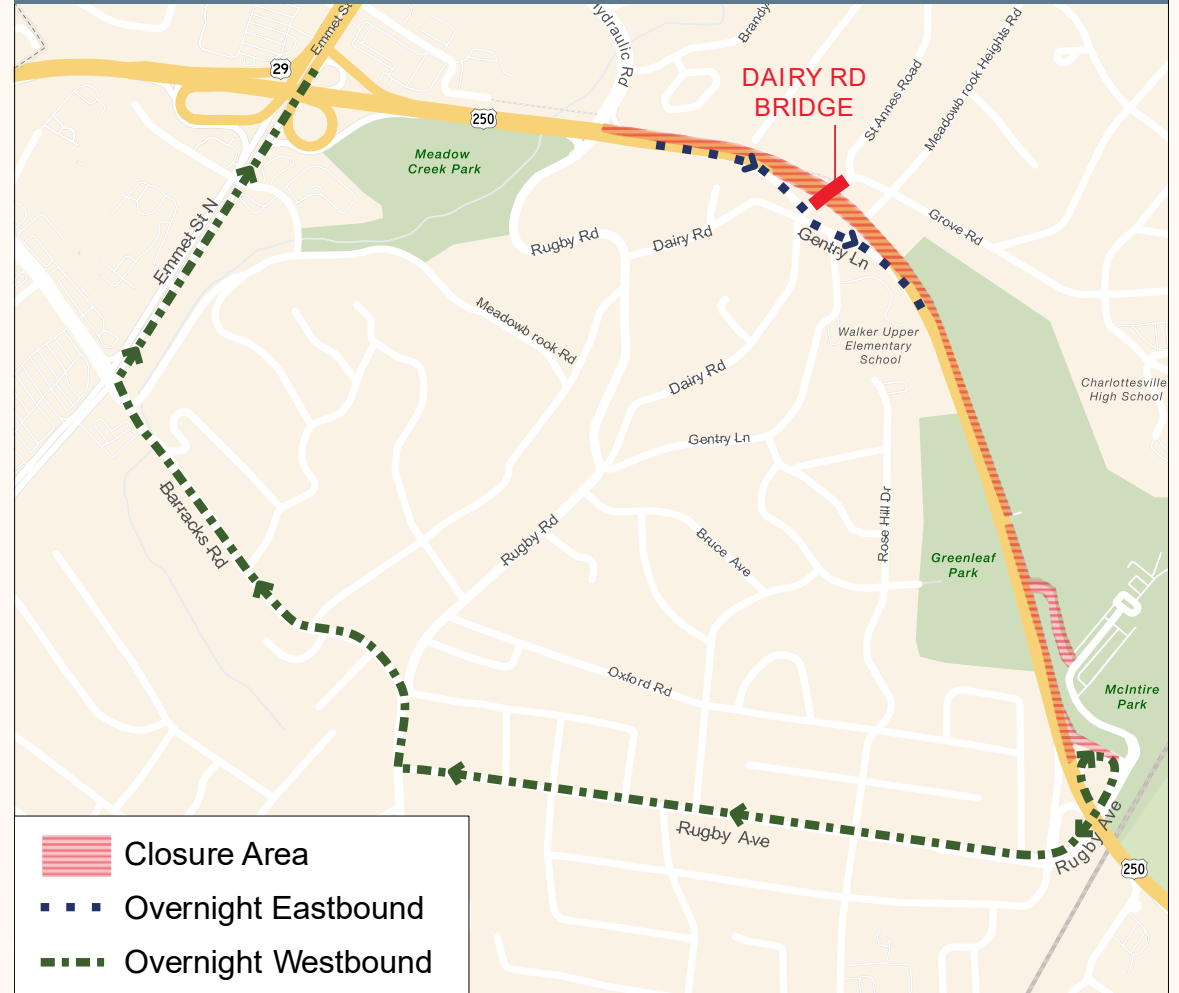


# Detours (continued)

## Staging Detour



## Intermittent Overnight Detour





# Schedule

Milestone	Planned Date
Public Hearing	July 15, 2025
Advertisement for Construction	August 2026
Construction Activities Begin	December 2026
Bridge Closed	February 2027
New Bridge Reopened	March 2028
Construction Complete	May 2028

*Learn More:*  
**dairyroadbridge.org**



Comment form:

